

# FORD RANGER



# THE SIMPLE WAY TO DRIVE A NEW FORD RANGER

**1** EXPLORE

**2** SELECT

**3** CUSTOMISE

**4** SPECIFICATIONS

**5** PURCHASE



*Ranger Wildtrak Double Cab in Sabre Orange metallic body colour (option)  
with 18" Medium Bolder Grey alloy wheels (option).*

# 1 EXPLORE

## YOUR CAPABLE PARTNER

The Ford Ranger is the pick-up truck that will help you tackle any challenge head on. Boasting more technology than ever before, outstanding interior comfort and a range of smart driver assistance and safety features, it's the only truck with enough drive to match your own.

Vehicle shown features accessories, available at extra cost.

Model shown is a Double Cab Wildtrak in Moondust Silver metallic body colour with Load box bedliner (option).





**1** EXPLORE

## **LIVE LIFE TO THE FULLEST**

### **ITS TOUGHNESS RUNS DEEP**

Built for the demands of the modern world, Ford Ranger is always ready for work or play. It's tough enough to haul all week, then carry jet skis or a quad bike to an off-road trail at the weekend. Add to that an outstanding combination of pulling power, fuel-efficiency and advanced driving technologies, and Europe's best-selling pick-up\* has the ability to turn any trip into an adventure to remember.

Vehicle shown features accessories, available at extra cost.

\*Based on latest available data for the 20 European main markets where Ford is represented through National Sales Companies. The Euro 20 markets are: Austria, Belgium, Britain, Czech Republic, Denmark, Finland, France, Germany, Greece, Hungary, Ireland, Italy, Netherlands, Norway, Poland, Portugal, Spain, Romania, Sweden and Switzerland.

*Ranger Wildtrak Double Cab in Sabre Orange metallic body colour (option) with 18" Medium Bolder Grey alloy wheels (option).*



**1** EXPLORE

## DESIGNED AROUND YOU

Sophistication and craftsmanship come together beautifully in the Ford Ranger. No matter your destination or travelling companions, its interior will reward you with SUV levels of luxury and style.

In Wildtrak (shown), the sculpted, supportive seats are partially trimmed in leather and feature an embossed Wildtrak logo, while the 8-way power-adjustable driver's seat helps to keep you sitting comfortably.

Ranger's thoughtful design offers a wealth of advanced features and technologies, including FordPass Connect on-board modem, Ford SYNC 3 with 8" colour touchscreen and navigation\* to help guide you through even the toughest working day.

\*Availability varies according to series, may be optional at additional cost.

!Don't drive while distracted. Use voice-operated systems when possible; don't use handheld devices while driving. Some features may be unavailable while the vehicle is in gear. Not all features are compatible with all phones.

*Ranger Wildtrak Double Cab with Journey Grain leather in Ebony (standard) with automatic transmission (standard).*

## READY FOR THE CHALLENGE

If you want a job done right, let the Ford Ranger do it. Offering an outstanding combination of four-wheel drive capability, impressive power and traction, partnered with up to 3,500 kg maximum towing capacity\*, the Ranger is so capable you'll have to remind yourself that you are actually pulling a fully laden trailer. The vehicle also has exceptional wading capability and is designed to drive through water up to 800 mm deep.

**Note** Always consult the Owner's Manual before off-road driving. Follow all laws and drive on designated off-road trails and recreation areas. Care is required when driving through water and speed levels must be reduced accordingly. When a trailer is attached, it is important that it has adequate mass to ensure road traction on all wheels.

\*Maximum towing varies based on cargo, vehicle configuration, accessories and number of passengers.

\*\*Try to avoid water higher than the bottom of the hubs and proceed slowly. Refer to your Owner's Manual for detailed information regarding driving through water.

Vehicle shown features accessories, available at extra cost.

*Ranger XLT Double Cab in Blue Lightning metallic body colour (option) with 17" Panther Black cast alloy painted sport wheels (option).*





**1** EXPLORE

## **RAPTOR, THE ULTIMATE RANGER**

The sensational Ford Ranger Raptor is the toughest and highest performing Ranger ever. Developed by Ford Performance for the true off-road enthusiast, it combines rugged performance with confident, surefooted capability.

Ranger Raptor is powered by the 2.0L Ford EcoBlue diesel engine. Developing 213 PS (157 kW) and a mighty 500 Nm of torque, it drives Raptor's four-wheel drive system via a 10-speed automatic transmission to get you in the right gear at the right time.

Built to withstand high-impact off-road events, its unique, super-strong reinforced chassis frame uses high-strength, low-alloy steel to endure the rigours delivered by the most challenging environment.

Race-bred off-road FOX Pro suspension is designed to tackle fearsome terrain with ease, smoothing out bumps and ruts while leaving you in complete control and comfort.

*Ranger Raptor Double Cab in Ford Performance Blue metallic body colour (option) with 17" Dyno Grey alloy wheels (standard).*



## TAKE CONTROL

The Ranger Raptor interior offers a powerful fusion of sportiness and top-level comfort, putting you firmly in control.

The bolstered front sports seats are specially designed for off-road support, with technical-suede materials for enhanced grip. Exclusive blue stitching and leather accents feature throughout. Even the perforated leather steering wheel is specially designed with an on-centre marker and Raptor logo, and is equipped with racing-style magnesium paddle shifters for manual gear selection override.

Ranger Raptor also features a Terrain Management System with six selectable drive modes that allow you to optimise its performance on a wide range of terrain and driving conditions.

From now on, you will view every road and every drive from an entirely new perspective.

*Ranger Raptor Double Cab with Soho Grain Premium Leather (standard) and automatic transmission (standard).*







## 1 EXPLORE

### POWER ROLLER SHUTTER

#### KEEPING YOU COVERED

With its sleek design and clean profile, Ranger's new power roller shutter offers improved security and protection from the elements. (Option on Wildtrak Double Cab)

- **Power-operation** uses the vehicle's own electrical system
- **Anti-pinch function** retracts the roller shutter a small amount from any detected obstruction
- **Ice break mode** overrides the anti-pinch function in cold weather conditions to enable the system to break free of any ice
- **Accessory channels** run down each side of the loadbox, allowing you to fit aftermarket accessories as desired



#### Roller shutter operation

Ranger's power roller shutter is easily operated from the key fob, driver's side dash or inside the loadbox.

*Ranger Wildtrak Double Cab in Sabre Orange metallic body colour (option) with power roller shutter (option).*



## 1 EXPLORE

### RANGER CHASSIS CAB

The new Ford Ranger Chassis Cab is the ideal donor vehicle for conversions to suit a range of specialist applications, including construction, utilities, forestry, military and rescue operators. Using rugged body-on-frame construction, and with standard four-wheel drive, Ranger Chassis Cab is built for customers who work in the most demanding environments while needing a tough, off-road vehicle to carry their specialist kit.

#### Standard features include

- **Single Cab design** permits a maximum conversion length behind the cab of 2,518 mm
- **Heavy-duty leaf spring rear suspension and flat rear surface** provides a versatile base for specialist conversions
- **3,270 kg\* gross vehicle mass (GVM) and 3,500 kg\*\* towing capacity** enables converters to build vehicles with significant load-hauling capability
- **2.0-litre Ford EcoBlue 170 PS diesel engine** delivers 420 Nm of torque through a six-speed manual transmission

Ranger Chassis Cab can be further enhanced with a range of Ford Special Vehicle Options, including a trailer tow electrical connector, high-performance batteries for increased electrical loads, and an interface to link conversions and vehicle signals – for example, to prevent a tipper body from operating unless the vehicle is parked and in neutral. Please refer to your Ford Dealer for details.

\*Cargo and load capacity limited by weight and weight distribution.

\*\*Maximum towing varies based on cargo, vehicle configuration, accessories and number of passengers.

*Ranger XL Chassis Cab in Frozen White solid body colour (standard) with 16" Silver steel wheels (standard).*



## IMPRESSIVE TOWING CAPABILITY

When it comes to towing heavy loads, the Ford Ranger really comes into its own. With a gross payload of over 1 tonne, and up to 3,500 kg towing capability\*, you can take on the big tasks and tow bulky loads<sup>§</sup>. Further confidence comes from Ranger's Trailer Sway Control<sup>®</sup> system that is designed to detect 'snaking' or trailer sway and reduce your vehicle's speed to help make towing more controlled. The system slows the vehicle down by applying the brakes and reducing the engine's torque if needed. (Standard, but activated with optional Ford trailer tow attachment)



Rear-view camera with Trailer Hitch Assist

Select reverse and the view to the rear of your Ranger vehicle is displayed in the Multi-Functional Display screen. Marker lines overlaid on the camera image indicate where your vehicle is heading. (Standard on Limited and above)

\*Cargo and load capacity limited by weight and weight distribution.

\*\*Maximum towing varies based on cargo, vehicle configuration, accessories and number of passengers.

†Raptor payload 620 kg, towing capability 2,500 kg.

‡Cameras only operate at speeds under 6 mph (10 km/h).

§Uses sensors. ††Safety feature.

*Ranger XLT Double Cab in Blue Lightning metallic body colour (option) with 17" Black Panther cast alloy sport wheels (option).*





1 EXPLORE

## WHEREVER THE ROAD TAKES YOU

Ford Ranger has a long-established reputation as one of the most capable pick-ups. With its four-wheel drive system with Roll Stability Control and Traction Control – in addition to an electronic locking rear differential\* – the versatile and sure-footed Ranger is perfect for a tough week at work, followed by an adventurous weekend off-road†.



### 10-speed automatic transmission

10-speed automatic transmission ensures you are always in the right gear. (Standard on Raptor and available as an option on Limited and Wildtrak with either the 170PS or the 213PS Ford EcoBlue engine)



### Hill Start Assist<sup>(2)</sup>

Designed to temporarily prevent you from rolling down a slope when you move your foot from the brake pedal to the accelerator pedal. It works in forward and reverse gears, and can be used when towing and pulling loads. (Standard)

<sup>(1)</sup>Uses sensors. <sup>(2)</sup>Driver Assistance feature.

**Note** Driver-assist features are supplemental and do not replace the driver's attention, judgement and need to control the vehicle. Vehicle shown features accessories, available at extra cost.

*Ranger Wildtrak Double Cab in Moondust Silver metallic body colour (option) with 18" Bolder Grey alloy wheels (standard).*



SYNC

## EXPLORE

# MEET YOUR PHONE'S NEW BEST FRIEND

## FORD SYNC 3

Ford SYNC 3 integrates seamlessly with your compatible smartphone, letting you control everything from phone calls and text messaging to music and satellite navigation – all via the 8" touchscreen or through remarkably simple voice commands. Map updates help to keep you on track and on time, and are complimentary for a limited period following vehicle registration.

## SYNC 3 FEATURES

- Manage your phone, music, apps and navigation with simple voice commands
- Hear your text messages read aloud for you
- Emergency Assistance\* helps occupants place an emergency call for emergency services
- Control SYNC-compatible apps via Apple CarPlay and Android
- Navigate your smartphone through the SYNC 3 home screen, as if it were your handset
- Colour touchscreen supports multi-touch 'swipe' and 'pinch-to-zoom' movements, and lets you arrange application icons and background displays, just as you would on your tablet or smartphone

**Please note:** Full SYNC 3 smartphone integration only available with iPhone 5/Android 5.0 (Lollipop) or higher. Some SYNC 3 functions require a data connection, so mobile data charges will apply.

\*Ford Emergency Assistance is an innovative SYNC feature that uses a Bluetooth®-paired and connected mobile phone to help vehicle occupants initiate a call to the local Communications Centre, following a vehicle crash event involving an airbag deployment or fuel pump shut off. The feature operates in more than 40 European countries and regions.



## EXPLORE

# 100% CONNECTED

## FORDPASS PRO

Whether you work with one business vehicle or manage up to five, FordPass Pro gives you the tools you need to help keep them healthy, secure, and running smoothly.

- **Quick Setup** Use your phone's camera to add up to five vehicles to your account through the app using the vehicles' VIN numbers
- **Vehicle Health** Keep on top of maintenance with easy access to real-time vehicle health information
- **Health Alerts** Receive notifications for key vehicle health information, such as oil life and tyre pressures
- **Fleet Health on Map** Check the location and health status of all your vehicles on a single map at the start and end of the working day
- **Remote Lock and Unlock** Zonal Unlocking lets you control the cabin and load doors separately, so you can allow someone access to the cabin while keeping your load compartment secure
- **Remote Start** Ensure your vehicles are ready for the day, ahead of schedule, by starting them remotely. This will even defrost the windscreen and activate your heated seats<sup>†</sup> and steering wheel<sup>†</sup> on a cold winter's morning
- **Guard Mode** Set your vehicle in a heightened state of security. Guard Mode will notify you if it detects someone trying to access your vehicle with a stolen or mimicked key
- **Roadside Assistance** Keep your fleet up and running with roadside assistance when you need it
- **Online Service Booking** Check your Dealer's availability and book your service direct via the app

Download **FordPass Pro** from the App Store or get it on Google Play.



Only Ford can deliver a fully-connected ecosystem that's built-in from the start. Ford has a comprehensive suite of connected services to help your business thrive, no matter how many vehicles you own.

## FORDPASS CONNECT\*

- **Live Traffic\*\*** Sends up-to-date traffic information directly to the SYNC 3 Navigation system. The technology then adjusts the recommended route based on the traffic conditions, so you waste less time on the way to your next job
- **Local Hazard Information\*\*** Uses multiple local and national information sources to warn you of hazards on the road ahead
- **On-board Wi-Fi\*\*\*** With speeds of up to 4G, on-board Wi-Fi enables mobile working for up to 10 devices. You can even use the hotspot from up to 15 m outside the vehicle for more efficient mobile working when you get to the site

## FORD DATA SERVICES<sup>‡</sup>

With Ford Data Services and FordPass Connect you can receive vehicle data securely to either your own telematics application or via your chosen Telematics Service Provider. Data available includes: vehicle health, vehicle location, fuel usage and driving characteristics, and can be received on multiple vehicles. Data can be integrated with your existing in-house application or your chosen Telematics Service Provider.

## FORD TELEMATICS<sup>‡</sup>

With Ford Telematics and FordPass Connect you can easily view data and manage all your vehicles using our intuitive user dashboard. Receive data on multiple vehicles including: vehicle health, vehicle location, fuel usage and driving characteristics. The information is presented with actionable insights that deliver the data you need to manage your fleet.

**Note** If you operate up to five Ford vehicles you should use FordPass Pro. If you have more than five vehicles, then we recommend using Ford Data Services<sup>‡</sup> and Ford Telematics<sup>‡</sup>.

**Note** FordPass Pro is a free app, compatible with select smartphone platforms and is available via download. Future features may be chargeable and message and data rates may apply.

\*The FordPass Connect on-board modem will be connected at the time of vehicle delivery. You may choose to opt in/out of certain data sharing. Remote access features will be free for the life of the vehicle (10 years).

\*\*Live Traffic and Local Hazard Information access is complimentary for 12 months following the registration of a new Ford featuring SYNC 3 Navigation; thereafter a subscription is payable. Local Hazard Information is subject to availability at time of purchase.

\*\*\*Wi-Fi hotspot (up to 4G LTE) includes a complimentary wireless data trial for a limited time only that begins at time of activation. Afterwards, data bundles can be purchased from Vodafone. Please refer to their website for details of their data packages. To take advantage of the built-in Wi-Fi hotspot capability, Ford vehicles must come with the appropriate hardware, and a data plan is required. Data coverage and service is not available everywhere and terms of your data plan, including applicable message and data rates, may apply.

<sup>†</sup>Where fitted.

<sup>‡</sup>Ford Data Services and Ford Telematics are available for Ford vehicles with a FordPass Connect modem or a Ford plug-in modem. Fleet/business customers only. Subscription charges and Ford Connected Service terms and conditions apply.

**FordPass Pro** is available in selected markets. Please see your Ford Dealer for details.

## 1 EXPLORE

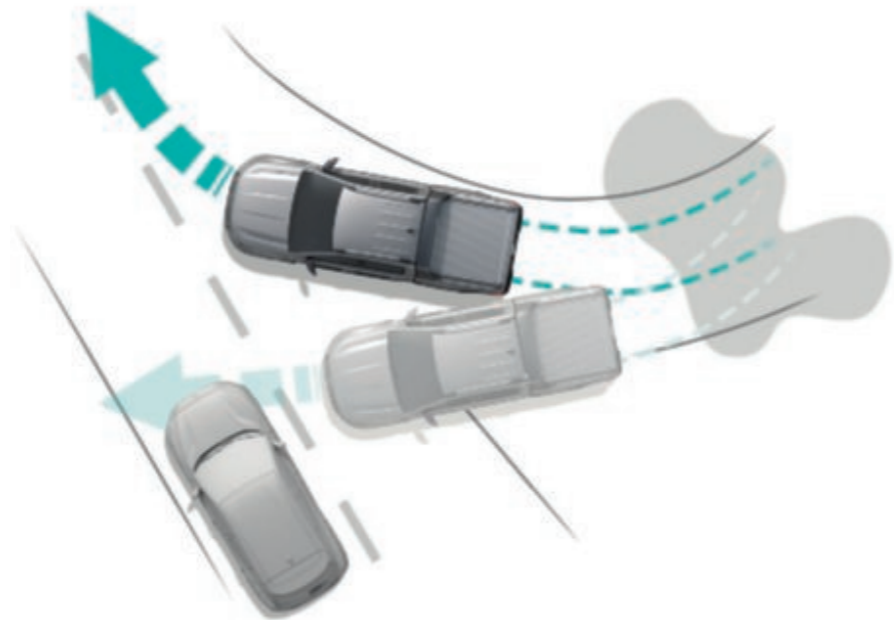
### ACTIVE PARK ASSIST<sup>02)</sup>

When you come to park your Ford Ranger, Active Park Assist can identify a suitable parking space, and automatically steer your vehicle in or out of a parallel space while you control the pedals and gears. (Option on Limited and Wildtrak)



### ELECTRONIC STABILITY CONTROL (ESC)<sup>01)</sup>

Senses when you are deviating from your chosen line and aims to keep you on track by automatically regulating braking and engine output. Traction Control<sup>01)</sup> is designed to reduce excessive wheelspin and improves grip by constantly monitoring and adjusting the torque delivered to individual wheels. (Standard)



<sup>0)</sup>Uses sensors.

<sup>1)</sup>Safety feature.

<sup>2)</sup>Driver Assistance feature.

**Note** Driver-assist features are supplemental and do not replace the driver's attention, judgement and need to control the vehicle.

Remember that even advanced technology cannot overcome the laws of physics. It's always possible to lose control of a vehicle due to inappropriate driver input for the conditions.

*Top and bottom: Ranger Wildtrak Double Cab in Sabre Orange metallic body colour (option) with Active Park Assist (option).*



### PRE-COLLISION ASSIST<sup>02)</sup> AND ACTIVE BRAKING<sup>02)</sup>

Pre-Collision Assist is designed to monitor your proximity to other vehicles – even in the dark – and can alert you to a potential collision. If you don't respond to the system's warning signals, Active Braking pre-charges the braking system for enhanced effectiveness when you brake. If the system determines a collision may occur, Active Braking is designed to automatically apply the brakes to help reduce the impact of frontal collisions. (Standard)

### PEDESTRIAN DETECTION<sup>02)</sup>

Ford's Pedestrian Detection technology uses forward-facing camera and radar to detect people in the road, and automatically applies the brakes if the driver does not respond to warnings. If the system detects a pedestrian and determines that a collision has become imminent, the driver will first receive an audible alarm and visual warning. Should the driver fail to respond, the system readies the braking system and, if there is still no response from the driver, the brakes are applied automatically. (Standard)

<sup>0)</sup>Uses sensors.

<sup>2)</sup>Driver Assistance feature.

**Note** Driver-assist features are supplemental and do not replace the driver's attention, judgement and need to control the vehicle.

Vehicle shown features accessories, available at extra cost.

*Top and bottom: Ranger Limited Double Cab in Moondust Silver metallic body colour (option) with 17" Bright Polished Silver alloy wheels (standard).*



## 1 EXPLORE

### ADAPTIVE CRUISE CONTROL

Set your desired speed and Adaptive Cruise Control can maintain a pre-set distance from the vehicle in front. If the sensors detect traffic slowing ahead, your vehicle is designed to automatically slow down. When traffic ahead is cleared, your vehicle will return back to your pre-set cruising speed. (Available on Limited and Wildtrak)



### TRAFFIC SIGN RECOGNITION

Designed to automatically read standard format road-speed signs and display the last posted speed limit in the driver's instrument cluster. (Standard)

### FORD POWER STARTER BUTTON

The Ford KeyFree System allows you to lock and unlock the doors and tailgate, and start the engine without having to get the keys out of your pocket or bag. The passive sensor inside the car can detect you approaching from a 1.2-metre radius. (Standard on Limited, Wildtrak and Raptor)



### DUAL-ZONE ELECTRONIC AUTOMATIC TEMPERATURE CONTROL (DEATC) AIR CONDITIONING

Ranger's DEATC air conditioning system can be adjusted separately for the driver and front passenger, with up to 4°C variation from side to side. (Standard on Limited, Wildtrak and Raptor, option on XLT)

<sup>1</sup>Uses sensors.

<sup>2</sup>Driver Assistance feature.

**Note** Driver-assist features are supplemental and do not replace the driver's attention, judgement and need to control the vehicle.

*Top: Ranger Wildtrak Double Cab with Journey Grain leather in Ebony (standard) and adaptive cruise control (option).*

<sup>2</sup>Driver Assistance feature.

**Note** Driver-assist features are supplemental and do not replace the driver's attention, judgement and need to control the vehicle.

*Top: Ranger Wildtrak Double Cab in Sabre Orange metallic body colour (option).  
Bottom: Ranger Wildtrak Double Cab with Journey Grain leather in Ebony (standard).*



# 2

SELECT

## FORD RANGER

### THE POWER OF CHOICE

As befits such a versatile vehicle, Ford Ranger is available in a wide range of bodystyles and series, allowing you to choose the version that's right for you. Several trim levels and engines are available, as well as four cabs (including the new Chassis Cab version), plus loads of appearance and capability options. The more you have to do, the more ways Ranger can help you get it done.

BODYSTYLES



RANGER CHASSIS CAB



RANGER SINGLE CAB



RANGER SUPER CAB



RANGER DOUBLE CAB

## 2 SELECT

## XL

### Key exterior features

- 16" steel wheels
- Body colour front bumper
- Electrically-operated and heated door mirrors
- Emergency Brake Assist
- Intelligent Speed Assist/Traffic Sign Recognition
- Lane-Keeping System
- Electronic Stability Control (ESC)
- Intermittent variable windscreen wipers
- Ford Easy Fuel capless refuelling system
- Under-run bar

### Key interior features

- Auto Start-Stop
- Quickclear heated windscreen
- Manual air conditioning
- Cruise control
- DAB Radio with Bluetooth®, USB and AUX points
- Electronic shift-on-the-fly (4x4)
- Electrically-operated front windows with one-shot driver's window
- 6-way adjustable driver's seat

### Bodystyles

Chassis Cab 4x4  
Regular Cab 4x4  
Super Cab 4x4  
Double Cab 4x4

### Engines

#### Diesel

2.0L EcoBlue 130 PS (96 kW)  
2.0L EcoBlue 170 PS (125 kW)

**Note** The Bluetooth® word mark and logos are owned by the Bluetooth SIG, Inc. and any use of such marks by Ford Motor Company Limited and its associated companies is under licence. Other trademarks and trade names are those of their respective owners.



## 2 SELECT

### XLT

#### Key exterior features, additional to XL

- 16" alloy wheels
- Chrome-finish door mirror caps and door handles
- Chrome-finish grille
- Chrome rear under-run bar
- Plastic moulded side steps
- Front fog lights
- Loadbox bedliner with 12 V socket
- Power tailgate lock
- Power-operated, heated and foldable door mirrors
- Automatic headlights and rain-sensing wipers

#### Key interior features, additional to XL

- Radio/CD/DAB with 4.2" TFT screen,
- Bluetooth® and USB connectivity, SYNC with voice control, AppLink and Emergency Assistance\*
- Leather-trimmed steering wheel with remote audio controls
- Auto-dimming rear-view mirror
- Overhead console
- Illuminated vanity mirror sun visors

#### Bodystyles

Super Cab 4x4  
Double Cab 4x4

#### Engine

**Diesel**  
2.0L EcoBlue 170 PS (125 kW)



## 2 SELECT

### Limited

#### Key exterior features, additional to XLT

- 17" silver alloy wheels
- Keyless entry
- Rear-view camera
- Rear parking sensors
- Bi-xenon headlights with LED daytime running lights
- Electrically-operated and heated power-foldable door mirrors with puddle lights
- Chrome tubular sports bar
- Rear privacy glass
- EasyLift tailgate

#### Key interior features, additional to XLT

- Ford Power starter button
- SYNC 3 with 8" Touchscreen, Apple Carplay and Android Auto
- 8-way power adjustable and heated driver's seat with lumbar support (Double Cab only)
- Leather interior
- Ranger logo floor mats
- Power converter
- Cool Box in centre console

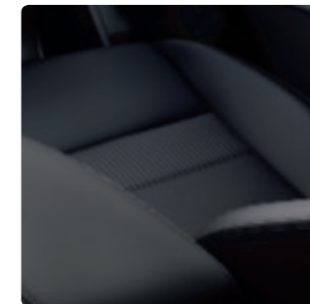
#### Bodystyles

Super Cab 4x4  
Double Cab 4x4

#### Engines

##### Diesel

2.0L EcoBlue 170 PS (125 kW)  
2.0L EcoBlue 213 PS (157 kW)



# Wildtrak

### Key exterior features, additional to Limited

- 18" alloy wheels
- Plastic moulded side steps with titanium effect inserts
- Aerodynamic sports hoop with integrated loadbox illumination
- Titanium-effect grille, door handles and rear steel step
- Aluminium-finish roof rails
- Titanium-effect, electrically-operated and heated power-foldable door mirrors with puddle lights and side indicators

### Key interior features, additional to Limited

- SYNC 3 with 8" Touchscreen and Navigation
- New partial-leather seat trim design
- Wildtrak logo floor mats
- Ambient lighting

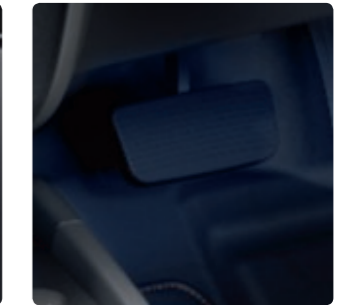
### Bodystyles

Double Cab 4x4

### Engines

#### Diesel

2.0L EcoBlue 213 PS (157 kW)



## Raptor

### Key exterior features

- Unique 17" alloy wheels with all-terrain tyres
- Unique Raptor front grille
- Widened front and rear wheel arches with 150 mm wider track
- Aerodynamic sports hoop with integrated loadbox illumination
- Unique front and rear bumpers
- Front aluminium skid plate
- FOX Pro shock absorbers with position sensitive damping

### Key interior features

- Unique Raptor suede trim with heated and power-adjustable seats
- Unique perforated leather sports steering wheel with centre marker and Raptor logo
- Unique instrument panel cluster
- Terrain Management System with six selectable drive modes
- FordPass Connect onboard modem
- SYNC 3 with 8" Touchscreen and Navigation

### Bodystyle

Double Cab 4x4

### Engine

#### Diesel

2.0L EcoBlue 213 PS (157 kW)



# 3

## CUSTOMISE

Choose your body colour, wheels, options and extras, and make Ford Ranger unmistakably yours.



## LIFE IN GLORIOUS COLOUR

Ford Ranger owes its beautiful and durable exterior to a special multi-stage painting process. From the wax-injected steel body sections to the protective top coat, new materials and application processes ensure your Ranger will retain its good looks for many years to come.

## BODY COLOURS



**Frozen White**  
Solid body colour



**Race Red**  
Solid body colour  
(Not available on Wildtrak)



**Agate Black**  
Metallic body colour\*



**Blue Lightning**  
Metallic body colour\*



**Diffused Silver**  
Metallic body colour\*



**Moondust Silver**  
Metallic body colour\*



**Sea Grey**  
Metallic body colour\*



**Sabre Orange**  
Fashion Metallic body colour\*  
(Wildtrak only)



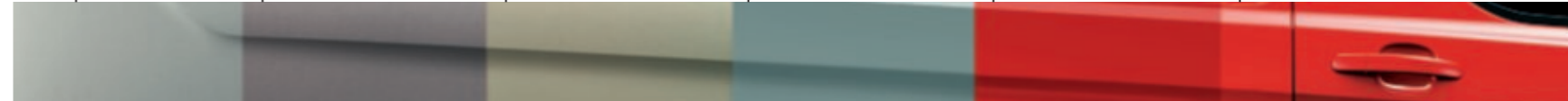
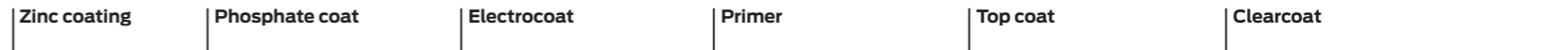
**Conquer Grey**  
Premium body colour

### 12-year perforation warranty

The Ford Ranger owes its durable exterior to a thorough multi-stage painting process. From the wax-injected steel body sections to the hard-wearing top coat, new materials and application processes ensure it will retain its good looks for many years to come.

\*Metallic and Premium body colours are options, at extra cost.  
**Note** The images used are to illustrate body colours only and may not reflect the vehicle described. Colours and trims reproduced within this brochure may vary from the actual colours, due to the limitations of the printing processes used.

**Ford Performance Blue**  
Fashion Metallic body colour\*



### 3 CUSTOMISE TRIMS



**Circuit fabric in Ebony**  
Standard on XL



**Penta fabric in Ebony**  
Standard on XLT



**Soho Grain leather in Ebony**  
Standard on Limited



**Journey Grain leather in Ebony**  
Standard on Wildtrak



**Soho Grain leather in Ebony**  
Standard on Raptor

*Wildtrak with Journey Grain leather in Ebony with Sabre stitching.*





### 3 CUSTOMISE WHEELS



**16"**  
**Steel wheel**  
Standard on XL.



**17"**  
**Silver alloy wheel**  
Standard on Limited, option on XLT.



**17"**  
**Panther Black cast alloy wheel**  
Option on XLT and Limited.



**18"**  
**Machine Faced painted Medium Bolder Grey alloy wheel**  
Option on Limited.



**18"**  
**Fully painted Medium Bolder Grey alloy wheel**  
Option on Wildtrak.



**18"**  
**Fully painted gloss Ebony Black alloy wheel**  
Option on Wildtrak.

Ranger Wildtrak Double Cab in Sabre Orange metallic body colour (option) with Fully painted Medium Bolder Grey alloy wheels (option).

**Note** All alloy wheels are available as accessories through your Ford Dealer at extra cost. Visit: [www.ford-accessories.com](http://www.ford-accessories.com)



### 3 CUSTOMISE LOAD BED COVERS



#### Rigid tonneau cover, 3-piece system

Tough and practical lift-up hard tonneau cover designed to protect your load in the cargo area. Hinged on a strong aluminium frame with built-in load bed side rail system. Also available as a one-piece tonneau cover with easy lift-up lid. (Option and accessory. For Double Cab models only. Excludes Wildtrak and Raptor)



#### Mountain Top<sup>®</sup>+ soft tonneau cover, black

Robust awning type soft tonneau cover protects tools and equipment from rain and dust in the cargo area. Features a security strap-down system at the front, and attaches to the strong aluminium side tracks. Locks with a click system to the rear profile to completely cover the load bed. The release handle underneath is hidden by shutting and locking the tailgate to keep your load safe and secure. (Option and accessory. Excludes Single Cab)

\*Item covered by third party supplier's warranty, please see back cover for details.



#### Pickup Attitude<sup>+</sup> hard top Fleet Runner

Easily fitted fibreglass hard top with 3 lift-up doors: 2 plain side doors, 1 rear tailgate made from tinted fibreglass, and a front cab-side sliding window. Includes, dedicated harness for central locking and integrated 3rd brake light, exterior handle on all 3 doors and an interior handle on the tailgate as well as internal felt coating. (Accessory. Excludes Single Cab. Excludes Wildtrak and Raptor)

\*Item covered by third party supplier's warranty, please see back cover for details.

#### Roller shutter

Safely protect your tools and equipment in the load bed with this tough and practical roller shutter cover. Durable construction using ultra-strong extruded aluminium and featuring a high-quality locking mechanism to completely secure the load area. Available in Silver or Black and also compatible with crossbars. (Option and accessory. Excludes Single Cab)



#### EGR<sup>+</sup> rigid tonneau cover with rails

Easy to install, one-piece lockable aluminium hard cover system provides additional load bed security. Loads can be secured with lashing straps fixed to the side rails (50 kg max.). Side rails are compatible with roof rack clamp-type accessories. Quick-release hinge mechanism allows easy removal. (Accessory. For Double Cab models only. Excludes Wildtrak and Raptor)

\*Item covered by third party supplier's warranty, please see back cover for details.



#### Hard top with/without side windows

This Hard top feature converts Ranger's cargo area into a wagon-style load compartment. Easily installed using 6-point fitting G-clamps. Includes LED high-level brake lights, interior lights, plug and play wiring harness including central locking, jet washable interior with insulated headliner, sliding bulkhead window for ventilation and dark tinted/heated rear door glass. (Option (Double Cab) and accessory with windows/accessory without windows. Excludes Single Cab. Excludes Wildtrak and Raptor)



### 3 CUSTOMISE ACCESSORIES



1.



2.



3.



4.



5.



6.



7.



8.



9.

1. Eibach® Pro-Lift Kit
2. Underbody protection shield\*
3. Pickup Attitude® load bed slide tray
4. Alloy wheels\*
5. Pickup Attitude® headlight cover matte black
6. Thule® roof crossbars
7. Alpex 4x4® Lazer LED light bar
8. RIVAL® tailgate damper
9. Pickup Attitude® retractable step (rear)
10. EGR® fender flares
11. Roller shutter\*
12. Mountain Top® crossbars\*
13. Thule® roof bike carrier
14. Aeroklas® LED light bar

Fitment of accessories may have an impact on your vehicle's fuel consumption.

\*Option and accessory.

†Item covered by third party supplier's warranty, please see back cover for details.

For more Ranger accessories visit [shop.ford.co.uk](http://shop.ford.co.uk)

For a range of Ford branded merchandise visit [fordlifestylecollection.com](http://fordlifestylecollection.com)



# 4

## SPECIFICATIONS

Get to know your Ford Ranger inside and out, from its powerful and efficient engine technology to its confidence-inspiring four-wheel drive system.

## POWER YOUR WAY

### BUILT FOR POWER, EFFICIENCY AND REFINEMENT

Ford Ranger is powered by a range of sophisticated 2.0-litre EcoBlue diesel engines. Led by the powerful 213PS Bi-Turbo version, this high-performance unit delivers 500 Nm of torque for impressive load-hauling capability and off-road performance. The range further includes a refined and dependable 130PS/340 Nm engine, and a powerful 170PS version; developing up to 420 Nm of torque, it will make light work of even the heaviest load. No matter which engine you choose, you'll find it delivers the strong, dependable power that you've come to expect from Ranger, while using selective catalytic reduction technology (SCR) to exceed the latest stringent emissions regulations.

### 4X4 CONFIDENCE

Ford Ranger comes with an advanced 4x4 system<sup>2)</sup> as standard. A simple control in the centre console enables drivers to select rear-wheel drive or four-wheel drive while on the move to best suit changing conditions. A low range four-wheel drive setting further improves performance on steep hills and soft surfaces. For even more all-terrain capability, an electronically-locking rear differential is also available†.

<sup>2)</sup>Driver Assistance feature. **Note** Driver-assist features are supplemental and do not replace the driver's attention, judgement and need to control the vehicle.



## Dimensions

|   | Chassis Cab XL | Regular Cab XL | Super Cab XL | Double Cab XL | Super Cab XLT | Double Cab XLT | Super Cab Limited | Double Cab Limited | Double Cab Wildtrak | Double Cab Raptor |
|---|----------------|----------------|--------------|---------------|---------------|----------------|-------------------|--------------------|---------------------|-------------------|
| Exterior (mm)                                     |                |                |              |               |               |                |                   |                    |                     |                   |
| Overall length (with rear bumper where fitted)    | 5282           | 5282           | 5282         | 5282          | 5282          | 5282           | 5359              | 5359               | 5359                | 5363              |
| Overall width (with mirrors extended)             | 2163           | 2163           | 2163         | 2163          | 2163          | 2163           | 2163              | 2163               | 2163                | 2180              |
| Overall width (with mirrors folded)               | 1977           | 1977           | 1977         | 1977          | 1977          | 1977           | 1977              | 1977               | 1977                | 2028              |
| Overall height (unladen)                          | 1800           | 1800           | 1804         | 1815          | 1804          | 1815           | 1810              | 1821               | 1848                | 1873              |
| Track – Front and rear                            | 1560           | 1560           | 1560         | 1560          | 1560          | 1560           | 1560              | 1560               | 1560                | 1710              |
| Wheelbase   | 3220           | 3220           | 3220         | 3220          | 3220          | 3220           | 3220              | 3220               | 3220                | 3220              |
| Load box length (at floor without bedliner)       | –              | 2317           | 1847         | 1613          | 1847          | 1613           | 1847              | 1613               | 1575                | 1575              |
| Load box width (at floor without bedliner)        | –              | 1560           | 1560         | 1560          | 1560          | 1560           | 1560              | 1560               | 1560                | 1560              |
| Load box depth (without bedliner)                 | –              | 511            | 511          | 511           | 511           | 511            | 511               | 511                | 541                 | 541               |
| Loadspace between wheel arches (without bedliner) | 1139           | 1139           | 1139         | 1139          | 1139          | 1139           | 1139              | 1139               | 1139                | 1139              |
| Loading height (unladen)                          | 835            | 835            | 835          | 835           | 835           | 835            | 840               | 840                | 857                 | 906               |

**Chassis Cab**



**Super Cab**



## Dimensions

**Single Cab**



**Double Cab**



|                            | Chassis Cab XL | Regular Cab XL | Super Cab XL | Double Cab XL | Super Cab XLT | Double Cab XLT | Super Cab Limited | Double Cab Limited | Double Cab Wildtrak | Double Cab Raptor |
|----------------------------|----------------|----------------|--------------|---------------|---------------|----------------|-------------------|--------------------|---------------------|-------------------|
| Interior (mm)              |                |                |              |               |               |                |                   |                    |                     |                   |
| Front                      |                |                |              |               |               |                |                   |                    |                     |                   |
| Effective headroom         | 1024           | 1024           | 1024         | 1022          | 1024          | 1022           | 1024              | 1022               | 1022                | 1022              |
| Maximum effective leg room | 1058           | 1058           | 1058         | 1058          | 1058          | 1058           | 1058              | 1058               | 1058                | 1058              |
| Rear                       |                |                |              |               |               |                |                   |                    |                     |                   |
| Effective headroom         | –              | –              | 938          | 975           | 938           | 975            | 938               | 975                | 975                 | 975               |
| Maximum effective leg room | –              | –              | 796          | 902           | 796           | 902            | 796               | 902                | 902                 | 902               |

All dimensions are subject to manufacturing tolerances and refer to minimum specification models and do not include additional optional equipment.

## Fuel, performance and emissions

|  | 2.0L Ford EcoBlue (3.31 FDR) <sup>000</sup> | 2.0L Ford EcoBlue (3.55 FDR) <sup>000</sup> |
|--|---|---|
| Chassis Cab & Regular Cab 4x4 Diesel (Chassis Cab available in 2.0L Ford EcoBlue 170PS only) |   |   |
| Emission Standard  | EU6.2                                       | EU6.2                                       |
| Maximum Power PS (kW)  | 130 (96)                                    | 170 (125)                                   |
| Torque Nm  | 340   | 420   |
| CO <sub>2</sub> emissions NEDC – Min-Max. (g/km) <sup>0000</sup>                             | 178-188                                     | 178-188                                     |
| Transmission   | 6-Speed Man                                 | 6-Speed Man                                 |
| Fuel consumption mpg (L/100 km) NEDC – Min-Max. <sup>0000</sup>                              | 39.2 (7.2) - 40.9 (6.9)                     | 39.2 (7.2) - 40.9 (6.9)                     |
| Performance <sup>00</sup>  |   |   |
| Max. speed mph (km/h)  | 102 (165)                                   | 112 (180)                                   |
| 0-62 mph (secs)  | 11.1  | 10.9  |

|  | 2.0L Ford EcoBlue (3.55 FDR) <sup>000</sup> |
|--|---|
| Super Cab 4x4 Diesel   |   |
| Emission Standard  | EU6.2                                       |
| Maximum Power PS (kW)  | 170 (125)                                   |
| Torque Nm  | 420   |
| CO <sub>2</sub> emissions NEDC – Min-Max. (g/km) <sup>0000</sup> | 179-188                                     |
| Transmission   | 6-Speed Man                                 |
| Fuel consumption mpg (L/100 km) NEDC – Min-Max. <sup>0000</sup>  | 39.2 (7.2) - 40.9 (6.9)                     |
| Performance <sup>00</sup>  |   |
| Max. speed mph (km/h)  | 112 (180)                                   |
| 0-62 mph (secs)  | 11.1  |

|  | 2.0L Ford EcoBlue (3.55 FDR) <sup>000</sup> |
|--|---|
| Super Cab 4x4 Diesel   |   |
| Emission Standard  | EU6.2                                       |
| Maximum Power PS (kW)  | 170 (125)                                   |
| Torque Nm  | 420   |
| CO <sub>2</sub> emissions NEDC – Min-Max. (g/km) <sup>0000</sup> | 179-188                                     |
| Transmission   | 6-Speed Man                                 |
| Fuel consumption mpg (L/100 km) NEDC – Min-Max. <sup>0000</sup>  | 39.2 (7.2) - 40.9 (6.9)                     |
| Performance <sup>00</sup>  |   |
| Max. speed mph (km/h)  | 112 (180)                                   |
| 0-62 mph (secs)  | 11.1  |

## Fuel, performance and emissions

|  | 2.0L Ford EcoBlue (3.31 FDR) <sup>000</sup> | 2.0L Ford EcoBlue (3.55 FDR) <sup>000</sup> | 2.0L Ford EcoBlue Automatic (3.55 FDR) <sup>000</sup> | 2.0L Ford EcoBlue Automatic (3.55 FDR) <sup>000</sup> | 2.0L Ford EcoBlue Automatic <sup>0000</sup> (3.73 FDR) |
|--|---|---|---|---|--|
| Double Cab 4x4 Diesel  |   |   |   |   |  |
| Emission Standard  | EU6.2                                       | EU6.2                                       | EU6.2   | EU6.2   | EU6.2  |
| Maximum Power PS (kW)  | 130 (95)                                    | 170 (125)                                   | 170 (125)   | 213 (157)   | 213 (157)  |
| Torque Nm  | 340   | 420   | 420   | 500   | 500  |
| CO <sub>2</sub> emissions WLTP Overall – Min-Max. (g/km) <sup>0000</sup> | 178-188                                     | 179-188                                     | 197-201   | 201-204   | 233  |
| Transmission   | 6-Speed Man                                 | 6-Speed Man                                 | 10-Speed Auto   | 10-Speed Auto   | 10-Speed Auto  |
| Fuel consumption mpg (L/100 km) WLTP – Min-Max. <sup>0000</sup>          | 39.2 (7.2) - 40.9 (6.9)                     | 39.2 (7.2) - 40.9 (6.9)                     | 36.7 (7.7) - 37.7 (7.5)                               | 36.2 (7.8) - 36.7 (7.7)                               | 31.7 (8.9)   |
| Performance <sup>00</sup>  |   |   |   |   |  |
| Max. speed mph (km/h)  | 102 (165)                                   | 112 (180)                                   | 112 (180)   | 112 (180)   | 106 (170)  |
| 0-62 mph (secs)  | 11.1  | 11.3  | 11.4  | 9   | 10   |

<sup>000</sup>Available on Raptor only. Note for all Ford EcoBlue engines (except 213 PS manual variant and Raptor series variants): Values shown illustrate vehicles fitted with Auto Start-Stop. Auto Start-Stop system reduces CO<sub>2</sub>-emissions and fuel consumption by 6 g/km and between 0.2-0.3 L/100km respectively. <sup>000</sup>The illustrated axle ratio shown is the one available dependent upon model, GVM payload and engine/transmission combination. <sup>0000</sup>The declared fuel/energy consumptions and CO<sub>2</sub>-emissions for Stage 6c (NI) and Stage 6d-TEMP (MI) engines are measured according to the technical requirements and specifications of European Regulations (EC) 715/2007, (EC) 692/2008 and (EU) 2017/1151, as last amended. Fuel consumption and CO<sub>2</sub>-emissions may be specified for a vehicle variant and not for a single vehicle. The applied standard test procedure enables a comparison between different vehicle types and different manufacturers. In addition to the fuel efficiency of a vehicle; driving behaviour as well as other non-technical factors are very important in determining a vehicle's fuel/energy consumption and CO<sub>2</sub>-emissions. A guide on fuel economy and CO<sub>2</sub>-emissions which contain data for all new passenger carrying vehicle models is available at any point of sale free of charge or can be downloaded under <http://carfueldata.dft.gov.uk>

## Weights and loads

|  | Max. Payload Gross <sup>®</sup> | Front Axle Plated Mass | Rear Axle Plated Mass | Gross Vehicle Mass (kg) | Kerbweight (kg) <sup>♦</sup> | Axle Ratio | Max. Trailer Weight Unbraked | Max. Trailer Weight Braked | Max. GTM (kg) |
|--|---------------------------------|------------------------|-----------------------|-------------------------|------------------------------|------------|------------------------------|----------------------------|---------------|
| Chassis Cab & Regular Cab (Chassis Cab available in 2.0 Ford EcoBlue 170PS only) |                                 |                        |                       |                         |                              |            |                              |                            |               |
| 2.0 Ford EcoBlue 130 PS (96 kW) 6-speed manual <b>XL</b>                         | 1182                            | 1480                   | 1850                  | 3200                    | 2018                         | 3.31       | 750                          | 2500                       | 4800          |
| 2.0 Ford EcoBlue 170 PS (125 kW) 6-speed manual <b>XL</b>                        | 1252                            | 1480                   | 1850                  | 3270                    | 2018                         | 3.55       | 750                          | 3500                       | 6000          |
| Super Cab  |                                 |                        |                       |                         |                              |            |                              |                            |               |
| 2.0 Ford EcoBlue 170 PS (125 kW) 6-speed manual <b>XL</b>                        | 1197                            | 1480                   | 1850                  | 3270                    | 2073                         | 3.55       | 750                          | 3500                       | 6000          |
| 2.0 Ford EcoBlue 170 PS (125 kW) 6-speed manual <b>XLT</b>                       | 1179                            | 1480                   | 1850                  | 3270                    | 2091                         | 3.55       | 750                          | 3500                       | 6000          |
| 2.0 Ford EcoBlue 170 PS (125 kW) 6-speed manual <b>Limited</b>                   | 1142                            | 1480                   | 1850                  | 3270                    | 2128                         | 3.55       | 750                          | 3500                       | 6000          |
| Double Cab   |                                 |                        |                       |                         |                              |            |                              |                            |               |
| 2.0 Ford EcoBlue 170 PS (125 kW) 6-speed manual <b>XL</b>                        | 1140                            | 1480                   | 1850                  | 3270                    | 2130                         | 3.55       | 750                          | 3500                       | 6000          |
| 2.0 Ford EcoBlue 170 PS (125 kW) 6-speed manual <b>XLT</b>                       | 1121                            | 1480                   | 1850                  | 3270                    | 2149                         | 3.55       | 750                          | 3500                       | 6000          |
| 2.0 Ford EcoBlue 170 PS (125 kW) 6-speed manual <b>Limited</b>                   | 1088                            | 1480                   | 1850                  | 3270                    | 2182                         | 3.55       | 750                          | 3500                       | 6000          |
| 2.0 Ford EcoBlue 170 PS (125 kW) 10-speed automatic <b>Limited</b>               | 1068                            | 1480                   | 1850                  | 3270                    | 2202                         | 3.55       | 750                          | 3500                       | 6000          |
| 2.0 Ford EcoBlue 213 PS (157 kW) 10-speed automatic <b>Limited</b>               | 1036                            | 1480                   | 1850                  | 3270                    | 2234                         | 3.55       | 750                          | 3500                       | 6000          |
| 2.0 Ford EcoBlue 213 PS (157 kW) 10-speed automatic <b>Wildtrak</b>              | 1024*                           | 1480                   | 1850                  | 3270                    | 2246                         | 3.55       | 750                          | 3500                       | 6000          |
| 2.0 Ford EcoBlue 213 PS (157 kW) 10-speed automatic <b>Raptor</b>                | 620                             | 1550                   | 1580                  | 3130                    | 2510                         | 3.73       | 750                          | 2500                       | 5350          |

<sup>®</sup>Payload Gross = Gross vehicle mass, less kerbweight. GVM = Gross vehicle mass. The total permissible all-up weight of a rigid vehicle – i.e. with body, payload, ancillaries, fuel, oil, water, driver and crew. <sup>♦</sup>Kerbweight = The weight of the vehicle and all standard equipment including 90% fuel and liquids, but without the payload, driver or any passengers. <sup>♦</sup>All kerb masses quoted in this brochure are subject to manufacturing tolerances and are for standard models with minimum equipment. XLT, Limited and Wildtrak models will have greater kerb masses and, therefore, lower payloads due to the increased amount of standard equipment. Any additional options specified on the vehicle will reduce the payload accordingly. Note: All data in the this table is dependent on the actual specification of the vehicle and the market in which that vehicle is available. For customers intending to load the vehicle close to maximum payload, we suggest you also add a margin for error of 5% of Kerb Mass to the Kerb Mass figure before calculation, to reduce risk of overloading. Contact your local Ford Dealer for more information. **\*Note: To allow a canopy to be fit, the Sport Bar and rails are removed, effectively raising Max Gross Payload to 1045kg and allowing the canopy fitment.**

## Styling and appearance

|  | XL | XLT | Limited | Wildtrak | Raptor |
|--|----|-----|---------|----------|--------|
| Wheels   |    |     |         |          |        |
| 16"x7" Steel wheels in Silver (fitted with 255/70 R16 tyres, includes 16" Silver steel spare wheel) <sup>1)</sup>                  | ●  | –   | –       | –        | –      |
| 16"x7" Alloy wheels in Silver (fitted with 255/70 R16 tyres, includes Black steel spare wheel) <sup>1)</sup>                       | –  | ●   | –       | –        | –      |
| 17" x 7.5" Silver steel wheels (Fitted with 265/65 R17 tyres) & 17" Silver steel spare wheel                                       | –  | ○   | –       | –        | –      |
| 17"x8" Alloy wheels in Silver (fitted with 265/65 R17 tyres, includes 17" Black steel spare wheel) <sup>1)</sup>                   | –  | ○   | ●       | –        | –      |
| 17"x8" Alloy wheels in Panther Black (fitted with 265/65 R17 tyres, includes 17" Black steel spare wheel) <sup>1)</sup>            | –  | ○   | ○       | –        | –      |
| 18"x8" Alloy machined wheels in Boulder Grey (fitted with 265/60 R18 tyres, includes Boulder Grey alloy spare wheel) <sup>1)</sup> | –  | –   | –       | ●        | –      |
| 17"x8" Alloy wheels in Dyno Grey (fitted with 285/70 R17 tyres, includes Dyno Grey alloy spare wheel) <sup>1)</sup>                | –  | –   | –       | –        | ●      |
| Locking wheel nuts   | ○  | ●   | ●       | ●        | ●      |
| Spare wheel lock   | ○  | ○   | ○       | ●        | –      |
| Tyre pressure sensors  | –  | ●   | ●       | ●        | –      |

● = Standard, ○ = Option, at extra cost, □ = Part of an option pack, at extra cost.

<sup>1)</sup>The wheel you choose will be fitted with the tyre size noted, but no choice of tyre brand is available.

## Styling and appearance

|   | XL | XLT | Limited | Wildtrak | Raptor |
|---|----|-----|---------|----------|--------|
| <b>Design features</b>  |    |     |         |          |        |
| Black Sports Bar<br>Includes high mounted stop light and led load lights (within the bar).          | –  | ○   | ○       | –        | –      |
| Sports bar – Chrome, tubular, with high-mounted brake light. Deletes load rest on XLT               | –  | ○   | ●       | –        | –      |
| Sports Hoop – With load box illumination, side rails and high-mounted brake light                   | –  | –   | –       | ●        | ●      |
| Radiator grille – Self colour   | ●  | –   | –       | –        | –      |
| Radiator grille – Chrome finish   | –  | ●   | ●       | –        | –      |
| Radiator grille – Boulder Grey finish   | –  | –   | –       | ●        | –      |
| Radiator grille – Black   | –  | –   | –       | –        | ●      |
| Roof rails  | –  | –   | –       | ●        | –      |
| Door and tailgate handles – Self colour   | ●  | –   | –       | –        | –      |
| Door and tailgate handles – Chrome finish   | –  | ●   | ●       | –        | –      |
| Door and tailgate handles – Boulder Grey finish on door handles, moulded in colour tailgate handle) | –  | –   | –       | ●        | –      |
| Door and tailgate handles – Dyno Grey finish  | –  | –   | –       | –        | ●      |
| Front bumper – Body colour  | ●  | ●   | ●       | ●        | –      |
| Front bumper – Black  | –  | –   | –       | –        | ●      |
| Under-run bar – Black   | ●  | –   | –       | –        | –      |
| Under-run bar – Chrome finish   | –  | ●   | –       | –        | –      |
| Step design rear bumper – Chrome finish   | –  | □   | ●       | –        | –      |
| Step design rear bumper – Boulder Grey finish   | –  | –   | –       | ●        | –      |
| Rear bumper – Dyno Grey   | –  | –   | –       | –        | ●      |
| Raptor Decal package  | –  | –   | –       | –        | ○      |

● = Standard, ○ = Option, at extra cost, □ = Part of an option pack, at extra cost.

<sup>1)</sup>The wheel you choose will be fitted with the tyre size noted, but no choice of tyre brand is available.

## Driving experience

|  | XL | XLT | Limited | Wildtrak | Raptor |
|--|----|-----|---------|----------|--------|
| <b>Driver assistance</b>   |    |     |         |          |        |
| Cruise control with Adjustable Speed Limiter, Automatic Emergency Braking, Intelligent Speed Assist, Traffic Sign Recognition, Lane-Keeping System and Pre-Collision Assist (includes Pedestrian Protection)               | ●  | ●   | ●       | ●        | ●      |
| Adaptive Cruise Control with Forward Alert, Distance Alert, Automatic Emergency Braking, Intelligent Speed Assist, Traffic Sign Recognition, Lane-Keeping System and Pre-Collision Assist (includes Pedestrian Protection) | –  | –   | □       | □        | –      |
| Active Park Assist (Enhanced) – Including Perpendicular park assist, Park-Out Assist and Side Park Aid – Requires rear-view camera (not available on 3.2L)   | –  | –   | □       | □        | –      |
| Intelligent Speed Assist   | ●  | ●   | ●       | ●        | ●      |
| Lane-Keeping System  | ●  | ●   | ●       | ●        | ●      |
| Traffic Sign Recognition   | ●  | ●   | ●       | ●        | ●      |
| Electric power-assisted steering (EPAS)  | ●  | ●   | ●       | ●        | ●      |
| Emergency Brake Warning – Automatic flashing of indicator lights under heavy braking <sup>3)</sup>   | ●  | ●   | ●       | ●        | ●      |
| Rear Parking sensors (requires Step design rear bumper on XLT)   | –  | □   | ●       | ●        | ●      |
| Front Parking sensors  | –  | –   | ●       | ●        | –      |
| Rear-view camera (complete with Electrochromatic rear-view mirror), Rear-view camera image appears in the SYNC audio unit  | –  | –   | ●       | ●        | ●      |
| <b>Exterior lighting</b>   |    |     |         |          |        |
| Automatic headlights   | –  | ●   | ●       | ●        | ●      |
| Xenon headlights <sup>1)</sup>   | –  | –   | ●       | ●        | ●      |
| LED headlights <sup>2)</sup>   | –  | –   | ●       | ●        | ●      |
| Headlights – Daytime running lights  | ●  | ●   | ●       | ●        | ●      |
| High-mounted brake light   | ●  | ●   | ●       | ●        | ●      |
| Halogen front fog lights   | –  | ●   | ●       | –        | –      |
| LED front fog lights   | –  | –   | –       | ●        | ●      |
| Single rear fog light  | ●  | ●   | ●       | ●        | ●      |

● = Standard, ○ = Option, at extra cost, □ = Part of an option pack, at extra cost.

<sup>1)</sup>Available up to April, 2020. <sup>2)</sup>Available from April, 2020. <sup>3)</sup>Driver assistance feature.



## Driving experience

|   | XL | XLT | Limited | Wildtrak | Raptor |
|---|----|-----|---------|----------|--------|
| <b>Suspension</b>   |    |     |         |          |        |
| Performance suspension  | –  | –   | –       | –        | ●      |
| <b>Instruments and controls</b>   |    |     |         |          |        |
| Washer tank level warning light   | ●  | ●   | ●       | ●        | ●      |
| Front headlight levelling   | ●  | ●   | ●       | ●        | ●      |
| <b>Options Packs</b>  |    |     |         |          |        |
| XL Off-road Security Pack:<br>Adding Locking rear differential, Volumetric Anti-theft Alarm System and Underbody protection   | ○  | –   | –       | –        | –      |
| XL Off-road Security Pack with Power Converter:<br>Adding Locking rear differential, Volumetric Anti-theft Alarm System, Power convertor and Underbody protection (not available on Regular Cab)            | ○  | –   | –       | –        | –      |
| XLT Off-road Security Pack:<br>Adding Locking Rear Differential, Volumetric Anti-theft Alarm System and Underbody protection  | –  | ○   | –       | –        | –      |
| XLT Off-road Parking Pack with Security:<br>Adding Locking rear differential, Step design rear bumper with chrome finish, Rear parking sensors, Volumetric Anti-theft Alarm System and Underbody protection | –  | ○   | –       | –        | –      |
| XLT Premium Pack:<br>Adding Locking rear differential, Step design rear bumper with chrome finish, Rear parking sensors, Power convertor, Volumetric Anti-theft Alarm System and Underbody protection       | –  | ○   | –       | –        | –      |
| XLT Parking Sensors Pack:<br>Adding Step design rear bumper with chrome finish and Rear parking sensors   | –  | ○   | –       | –        | –      |
| Limited Off-road Pack:<br>Adding Locking rear differential and Underbody protection   | –  | –   | ○       | –        | –      |
| Limited Off-road Pack with Park Assist:<br>Adding Locking rear differential, Active park assist and Underbody protection  | –  | –   | ○       | –        | –      |
| Limited Premium Pack:<br>Adding Locking rear differential, Active park assist, Adaptive cruise control, Driver alert system, Auto High Beam, Heads up warning and Underbody protection                      | –  | –   | ○       | –        | –      |
| Active park assist  | –  | –   | ○       | ○        | –      |
| Driver Assistance Pack: Adding Adaptive cruise control, Driver alert system, Auto High Beam, Heads up warning   | –  | –   | ○       | ○        | –      |
| Wildtrak Driver Assistance Pack with Park Assist:<br>Adding Active park assist and Adaptive cruise control, Driver alert system, Auto High Beam, Heads up warning   | –  | –   | –       | ○        | –      |
| Locking Rear Axle (Standard on XL Chassis Cab, optional on XL Regular Cab, XL Super Cab and XL Double Cab)  | ○  | –   | –       | –        | –      |

● = Standard, ○ = Option, at extra cost, □ = Part of an option pack, at extra cost.

<sup>1)</sup>Available up to April, 2020. <sup>2)</sup>Available from April, 2020. <sup>3)</sup>Driver assistance feature.

## Performance and efficiency

|                              | XL | XLT | Limited | Wildtrak | Raptor |
|------------------------------|----|-----|---------|----------|--------|
| <b>Transmission</b>          |    |     |         |          |        |
| Automatic                    | –  | –   | ○       | ○        | ○      |
| Manual                       | ○  | ○   | ○       | –        | –      |
| Diesel fuel tank – 80 litres | ●  | ●   | ●       | ●        | ●      |
| AdBlue® tank – 20 litres     | ●  | ●   | ●       | ●        | ●      |

● = Available, – = Not Available.

## Comfort and convenience

|   | XL | XLT | Limited | Wildtrak | Raptor |
|---|----|-----|---------|----------|--------|
| <b>Interior convenience</b>   |    |     |         |          |        |
| Centre console – Long, double lid with 2 cup holders and coin storage   | ●  | ●   | ●       | ●        | ●      |
| Centre console – Front cool box (included in SYNC 3 ICE packs)  | –  | □   | ●       | ●        | ●      |
| Centre console – Plastic lid cover  | ●  | ●   | –       | –        | –      |
| Centre console – Premium lid cover  | –  | –   | ●       | ●        | ●      |
| Rear seat centre armrest (only for Double Cab)  | ●  | ●   | ●       | ●        | ●      |
| Driver and passenger sun visor – Vanity mirror on passenger side, ticket holder on driver side                  | ●  | –   | –       | –        | –      |
| Driver and passenger sun visor – Illuminated mirror and sliding rod on both sides, ticket holder on driver side | –  | ●   | ●       | ●        | ●      |
| Roof-mounted grab handles – Rear, two   | ●  | ●   | ●       | ●        | ●      |
| Storage pockets – Front door  | ●  | ●   | ●       | ●        | ●      |
| Storage pockets – Driver's seat   | –  | ●   | ●       | ●        | ●      |
| Manual interior rear-view mirror  | ●  | –   | –       | –        | –      |
| Electrochromatic rear-view mirror   | –  | ●   | ●       | ●        | ●      |
| Privacy glass   | –  | –   | ●       | ●        | ●      |
| Manual air conditioning   | ●  | ●   | –       | –        | –      |
| Dual-zone Electronic Automatic Temperature Control (DEATC) (included in SYNC 3 ICE packs)                       | –  | □   | ●       | ●        | ●      |
| Tachograph Prep Pack  | ○  | ○   | ○       | ○        | ○      |

● = Standard, ○ = Option, at extra cost, □ = Part of an option pack, at extra cost.

## Comfort and convenience

|   | XL | XLT | Limited | Wildtrak | Raptor |
|---|----|-----|---------|----------|--------|
| <b>Audio and communication systems</b>  |    |     |         |          |        |
| Ford DAB radio with USB and Bluetooth® connection. 3.5" Mono TFT screen and 4 speakers  | ●  | –   | –       | –        | –      |
| Ford SYNC 1.1 DAB radio with single CD Radio, USB and Bluetooth® connection. With microphone, 4.2" TFT touch screen and 6 speakers  | –  | ●   | –       | –        | –      |
| Ford SYNC 3 single CD DAB radio, USB, AUX connection and SD slot for external music devices. 8" TFT touchscreen and 6 speakers. With microphone and rear power point plug   | –  | ○   | ●       | –        | –      |
| Ford SYNC 3 single CD DAB radio, TMC and Active Noise Control. USB, AUX connection and SD slot for external music devices. 8" TFT touchscreen and 6 speakers. With Navigation, microphone and rear power point plug   | –  | ○   | ○       | ●        | ●      |
| FordPass Connect (Wi-Fi modem) – Standard with SYNC 3 systems   | ●  | ●   | ●       | ●        | ●      |
| MyKey (included with Ford SYNC 3 with Voice Control and touchscreen)  | –  | ○   | ●       | ●        | ●      |
| <b>Interior lighting</b>  |    |     |         |          |        |
| Interior ambient LED lighting   | –  | –   | –       | ●        | –      |
| <b>Seating</b>  |    |     |         |          |        |
| Front Seat Pack: Manual driver and passenger fabric seats with 4-way driver adjuster (fore/aft, recline, height and tilt), seat belt reminder and side roof-mounted grab handles  | ●  | –   | –       | –        | –      |
| Front Seat Pack: Manual driver and passenger fabric seats with driver seatback-mounted map pocket, 4-way driver adjuster (fore/aft, recline, height and tilt), seat belt reminder and side roof-mounted grab handles  | –  | ●   | –       | –        | –      |
| Front Seat Pack: Manual, heated driver and passenger seats with driver seatback-mounted map pocket, 4-way driver adjuster (fore/aft, recline, height and tilt), seat belt reminder and side roof-mounted grab handles. Limited – Full leather (only for Super Cab on Limited)   | –  | –   | ●       | –        | –      |
| Front Seat Pack: Power, heated driver and passenger seats with driver seatback-mounted map pocket, 8-way driver adjuster (fore/aft, recline, height, tilt and lumbar), seat belt reminder and side roof-mounted grab handles. Limited – Full leather, Wildtrak – Partial leather (with Wildtrak logo) (only for Double Cab) | –  | –   | ●       | ●        | –      |
| Front Seat Pack: Power, heated driver and passenger premium leather seats (with Raptor logo) with driver seatback-mounted map pocket, 8-way driver and passenger adjuster (fore/aft, recline, height, tilt and lumbar), seat belt reminder and side roof-mounted grab handles   | –  | –   | –       | –        | ●      |
| Rear Seat Pack: Fold-back second row bench seat with 2 outer inertia rear seat belts. Deletes cab back panel (only for Super Cab)   | ●  | □   | –       | –        | –      |
| Rear Seat Pack: Fold-back second row bench seat with 2 outer inertia rear seat belts and with cab back panel (only for Super Cab)   | –  | ●   | ●       | –        | –      |
| Rear Seat Pack: Second row bench seat with rear seat center armrest, three 3-point rear seat belts and ISOFIX hardpoint attachments (only for Double Cab)   | ●  | ●   | ●       | ●        | ●      |
| Front seats – Driver's manual height and tilt adjustment, with lumbar support adjustment and height-adjustable head restraints (only Super Cab on Limited)  | ●  | ●   | ●/–     | –        | –      |
| Front seats – Driver's power height, fore/aft, seatback angle and tilt adjustment (including lumbar support adjustment) (not available for Limited Super Cab)   | –  | –   | ●/–     | ●        | ●      |
| Front seats – Heated driver and passenger's   | –  | –   | ●       | ●        | ●      |
| Rear seats – Jump (less rear-centre head restraint) (only for Super Cab)  | ●  | ●   | ●       | –        | –      |
| Rear seats – Three across seating with height-adjustable head restraints and centre armrest (only for Double Cab)   | ●  | ●   | ●       | ●        | ●      |
| Seats – Fabric trim   | ●  | ●   | –       | –        | –      |
| Seats – Leather trim  | –  | –   | ●       | ●        | –      |
| Seats – Premium leather trim  | –  | –   | –       | –        | ●      |

## Comfort and convenience

|   | XL | XLT | Limited | Wildtrak | Raptor |
|---|----|-----|---------|----------|--------|
| <b>Instruments and controls</b>   |    |     |         |          |        |
| Dual power-heated mirrors – Self colour   | ●  | –   | –       | –        | –      |
| Dual power-heated fold-back mirrors – Chrome finish   | –  | ●   | –       | –        | –      |
| Dual power-heated fold-back mirrors with puddle lights and indicator – Chrome finish                    | –  | –   | ●       | –        | –      |
| Dual power-heated fold-back mirrors with puddle lights and indicator – Boulder Grey finish              | –  | –   | –       | ●        | –      |
| Dual power-heated fold-back mirrors with puddle lights and indicator – Black finish                     | –  | –   | –       | –        | ●      |
| Handbrake with black button   | ●  | –   | –       | –        | –      |
| Handbrake with chrome button  | –  | ●   | ●       | ●        | –      |
| Leather handbrake with chrome button  | –  | –   | –       | –        | ●      |
| Sunglasses holder   | –  | ●   | ●       | ●        | ●      |
| Moulded gearshift knob  | ●  | –   | –       | –        | –      |
| Leather gearshift knob (with stitching on Wildtrak only)  | –  | ●   | ●       | ●        | ●      |
| Steering column – Rake-adjustable   | ●  | ●   | ●       | ●        | ●      |
| 4-Spoke steering wheel  | ●  | –   | –       | –        | –      |
| Leather steering wheel  | –  | ●   | ●       | –        | –      |
| Stitched sport leather steering wheel   | –  | –   | –       | ●        | –      |
| Unique leather steering wheel   | –  | –   | –       | –        | ●      |
| Intermittent variable windscreen wipers   | ●  | –   | –       | –        | –      |
| Rain sensing wipers with acoustic laminated windscreen  | –  | ●   | ●       | ●        | ●      |
| Windows – Electrically-operated, with one-touch lowering/closing and anti-trap feature on driver's door | ●  | ●   | ●       | ●        | ●      |
| <b>Technology</b>   |    |     |         |          |        |
| Ford Easy Fuel capless refuelling system with misfuel inhibitor   | ●  | ●   | ●       | ●        | ●      |
| Front and rear window defroster   | ●  | ●   | ●       | ●        | ●      |

● = Standard, ○ = Option, at extra cost, □ = Part of an option pack, at extra cost.

The Bluetooth® word mark and logos are owned by the Bluetooth SIG, Inc. and any use of such marks by Ford Motor Company Limited and its associates is under licence. Other trademarks and trade names are those of their respective owners.

## Safety and security

|   | XL | XLT | Limited | Wildtrak | Raptor |
|---|----|-----|---------|----------|--------|
| <b>Safety</b>   |    |     |         |          |        |
| Seat belt reminder – Driver and front passenger's <sup>1</sup>  | ●  | ●   | ●       | ●        | ●      |
| Driver and passenger airbag restraint <sup>♦</sup>  | ●  | ●   | ●       | ●        | ●      |
| Seat-mounted thorax side airbag <sup>1</sup>  | ●  | ●   | ●       | ●        | ●      |
| Airbags – Side and curtain <sup>1</sup>   | ●  | ●   | ●       | ●        | ●      |
| Inflatable driver knee bolster <sup>1</sup>   | ●  | ●   | ●       | ●        | ●      |
| Low-speed crash foam in bumper  | ●  | ●   | ●       | ●        | ●      |
| Seat belts – Rear, three 3-point (ELR) diagonal inertia reel with grabbers (only for Double Cab)  | ●  | ●   | ●       | ●        | ●      |
| ISOFIX – Rear seats (only for Double Cab)   | ●  | ●   | ●       | ●        | ●      |
| <b>Security</b>   |    |     |         |          |        |
| Locks – Remote control double locking with 1 flip key and 1 key fob   | ●  | ●   | –       | –        | –      |
| Locks – Remote control double locking with 2 key fobs   | –  | –   | ●       | ●        | ●      |
| Childproof rear door locks (only for Double Cab)  | ●  | ●   | ●       | ●        | ●      |
| Ford KeyFree System (Keyless entry) with Ford Power starter button  | –  | –   | ●       | ●        | ●      |
| Thatcham Security System  | ●  | ●   | ●       | ●        | ●      |
| Volumetric anti-theft alarm system  | ●  | ●   | ●       | ●        | –      |
| Anti-theft alarm system – Remote control (complete with separate battery pack to avoid being disabled if main battery cable is cut)   | –  | –   | –       | –        | ●      |
| E-marked glass  | ●  | ●   | ●       | ●        | ●      |
| <b>Brakes</b>   |    |     |         |          |        |
| Electronic Stability Control (ESC) with emergency brake light <sup>1</sup> , Emergency Brake Assist (EBA) <sup>1</sup> , Load Adaptive Control (LAC) <sup>1</sup> , Hill Descent Control, Hill Start Assist <sup>2</sup> , Trailer Sway Control <sup>1*</sup> and Roll Over Mitigation (ROM) <sup>1</sup> | ●  | ●   | ●       | ●        | –      |
| Electronic Stability Control (ESC) with Terrain Management System   | –  | –   | –       | –        | ●      |
| Open style rear differential  | ●  | ●   | ●       | –        | –      |
| Locking rear differential   | □  | □   | □       | ●        | ●      |

● = Standard, ○ = Option, at extra cost, □ = Part of an option pack, at extra cost.

<sup>1</sup>Safety feature, <sup>2</sup>Driver assistance feature, \*Standard, but activated with optional Ford trailer tow attachment

**♦Note: A rear-facing child seat should never be placed in the front passenger seat when the Ford vehicle is equipped with an operational front passenger's airbag.**

## Utility

|  | XL | XLT | Limited | Wildtrak | Raptor |
|--|----|-----|---------|----------|--------|
| <b>Carpet and trim</b>   |    |     |         |          |        |
| Door handles – Black   | ●  | –   | –       | –        | –      |
| Door handles – Chrome finish   | –  | ●   | ●       | ●        | ●      |
| Non-woven carpet   | ●  | ●   | ●       | ●        | ●      |
| Front throw-in carpet floor mats   | ●  | ●   | –       | –        | –      |
| Front and rear throw-in floor mats (no rear floor mats for Super Cab)  | –  | –   | ●       | –        | –      |
| Premium front and rear floor mats (with Wildtrak logo for Wildtrak series only) (no rear floor mats for Super Cab) | –  | –   | –       | ●        | ●      |
| Premium cab back panel   | ●  | ●   | ●       | ●        | ●      |
| <b>Electrical</b>  |    |     |         |          |        |
| Accessory power socket (12 V) – Rear, one (not available for Regular Cab)  | ●  | ●   | ●       | ●        | ●      |
| Power converter (not available for Regular Cab)  | □  | □   | ●       | ●        | ●      |
| <b>Exterior function</b>   |    |     |         |          |        |
| Front mud flaps  | –  | –   | ●       | ●        | ●      |
| Rear mud flaps   | ●  | ●   | ●       | ●        | ●      |
| Side step with no inserts (not available for Regular Cab)  | ○  | –   | –       | –        | –      |
| Side step with bright-finish inserts   | –  | ●   | ●       | –        | –      |
| Side step with brushed inserts   | –  | –   | –       | ●        | –      |
| Side step incorporating Raptor logo (black)  | –  | –   | –       | –        | ●      |

● = Standard, ○ = Option, at extra cost, □ = Part of an option pack, at extra cost. \*Tie-down loops comply with DIN 75410. †Not compatible with Mountain Top Lockable Cover.

## Utility

|  | XL | XLT | Limited | Wildtrak | Raptor |
|--|----|-----|---------|----------|--------|
| <b>Loadspace compartment</b>   |    |     |         |          |        |
| Load rest (located in load box) – Deletes Chrome Sports Bar from Limited                                   | ●  | ●   | ○       | -        | -      |
| Pick-up box – DIN compliant outer tie-down hooks*  | ●  | ●   | -       | -        | -      |
| Pick-up box – DIN compliant inner tie-down hooks*  | ●  | ●   | ●       | ●        | ●      |
| Load box tie-down system – Inside tie-down hooks/rails that run along the length of the load box           | -  | -   | □       | □        | ●      |
| Cargo area management system   | -  | -   | ○       | ○        | -      |
| Cargo area management system and load rest (deletes Sports bar – Double Cab only)                          | -  | -   | ○       | -        | -      |
| Spray-in load box bedliner <sup>1</sup> (deletes Power point/hooks from XLT)                               | -  | ○   | ○       | ○        | -      |
| Load box bedliner with inside tie-down hooks and load box power point plug (not available for Regular Cab) | ○  | ●   | ○       | ○        | ●      |
| Load Box Bedliner and Cargo area management system   | -  | -   | ○       | ○        | -      |
| Mountain Top <sup>®</sup> rolling and lockable tonneau cover and chrome sports bar                         | -  | ○   | -       | -        | -      |
| Mountain Top <sup>®</sup> rolling and lockable tonneau cover and cargo area management system              | -  | -   | ○       | ○        | -      |
| Mountain Top <sup>®</sup> rolling and lockable tonneau cover with load bars                                | -  | -   | -       | -        | ●      |
| Rigid tonneau cover and chrome sports bar (only for Double Cab)  | -  | ○   | -       | -        | -      |
| Rigid tonneau cover and cargo area management system (only for Double Cab)                                 | -  | -   | ○       | -        | -      |
| 3-piece tonneau cover (only for Double Cab) – deletes Sport bar/ladder rest                                | ○  | ○   | ○       | -        | -      |
| Soft tonneau cover (not available for Regular Cab)   | ○  | ○   | -       | -        | -      |
| Soft tonneau cover and chrome sports bar   | -  | ○   | -       | -        | -      |
| Soft tonneau cover and cargo area management system  | -  | -   | ○       | -        | -      |
| Trailer Tow Pack. Contains Trailer tow hitch with 13 Pin Socket  | ○  | ○   | ○       | ○        | ●      |
| Manual locking tailgate  | ●  | -   | -       | -        | -      |
| Remote locking tailgate  | -  | ●   | ●       | ●        | ●      |
| Tailgate   | ●  | ●   | -       | -        | -      |
| Tailgate (with easy-lift/lower mechanism)  | -  | -   | ●       | ●        | ●      |
| Load Bed Divider Kit<br>Includes cargo area management system.   | -  | -   | ○       | ○        | -      |

● = Standard, ○ = Option, at extra cost, □ = Part of an option pack, at extra cost. \*Tie-down loops comply with DIN 75410. <sup>1</sup>Not compatible with Mountain Top Lockable Cover.

## Model Availability

|   | Chassis Cab (XL Only) | XL Regular Cab | Super Cab | Double Cab | XLT Super Cab | Double Cab | Limited Super Cab | Double Cab | Wildtrak Double Cab | Raptor Double Cab |
|---|-----------------------|----------------|-----------|------------|---------------|------------|-------------------|------------|---------------------|-------------------|
| <b>Ranger</b>                                     |                       |                |           |            |               |            |                   |            |                     |                   |
| 2.0L EcoBlue 130 PS (96 kW) – 6-speed manual      | -                     | ●              | -         | -          | -             | -          | -                 | -          | -                   | -                 |
| 2.0L EcoBlue 170 PS (125 kW) – 6-speed manual     | ●                     | ●              | ●         | ●          | ●             | ●          | ●                 | ●          | -                   | -                 |
| 2.0L EcoBlue 170 PS (125 kW) – 10-speed automatic | -                     | -              | -         | -          | -             | -          | -                 | ●          | -                   | -                 |
| 2.0L EcoBlue 213 PS (157 kW) – 10-speed automatic | -                     | -              | -         | -          | -             | -          | -                 | ●          | ●                   | ●                 |

● = Available, - = Not available. All models are 4x4.

## Manoeuvrability

|  | Chassis Cab XL | Regular Cab XL | Super Cab XL | Double Cab XL | Super Cab XLT | Double Cab XLT | Super Cab Limited | Double Cab Limited | Double Cab Wildtrak | Double Cab Raptor |
|--|----------------|----------------|--------------|---------------|---------------|----------------|-------------------|--------------------|---------------------|-------------------|
| Ground clearance (unladen, mm)               | 232            | 232            | 232          | 232           | 232           | 232            | 237               | 237                | 237                 | 283               |
| Angle of approach (unladen)                  | 28°            | 28°            | 28°          | 28°           | 28°           | 28°            | 29°               | 29°                | 29°                 | 32.5°             |
| Angle of departure (unladen) without tow bar | 27°            | 27°            | 27°          | 27°           | 27°           | 27°            | 27°               | 27°                | 27°                 | 27°               |
| Ramp Breakover Angle                         | 24°            | 24°            | 24°          | 24°           | 24°           | 24°            | 25°               | 25°                | 25°                 | 24°               |
| Tilt angle (unladen)                         | 35°            | 35°            | 35°          | 35°           | 35°           | 35°            | 35°               | 35°                | 35°                 | 35°               |
| Wading depth – mm                            | 800            | 800            | 800          | 800           | 800           | 800            | 800               | 800                | 800                 | 850               |
| Turning circle – Kerb to kerb, m             | 12.7           | 12.7           | 12.7         | 12.7          | 12.7          | 12.7           | 12.7              | 12.7               | 12.7                | 12.9              |

## Warranty

|   | XL | XLT | Limited | Wildtrak | Raptor |
|---|----|-----|---------|----------|--------|
| 3-year/60,000 miles* Ford Protect Classic Plan Warranty           | ●  | ●   | ●       | ●        | ●      |
| 1-year/unlimited mileage* Ford Assistance Roadside Cover (Europe) | ●  | ●   | ●       | ●        | ●      |
| 1-year/unlimited mileage* Paint Warranty                          | ●  | ●   | ●       | ●        | ●      |
| 12-year/unlimited mileage* Perforation Warranty                   | ●  | ●   | ●       | ●        | ●      |

● = Standard, ○ = Optional, at extra cost.

\*From the date of first registration. Subject to terms and conditions.

# 5

## OWNERSHIP

Getting behind the wheel of your next new Ford is simple, with a variety of finance options available to suit your business needs.



### Build your vehicle

Build and personalise your vehicle online. Simply head to the Ford website, select your model, then choose your engine, body colour and extras. You'll be able to view the recommended price, and send your configuration to a Ford Commercial Vehicle Dealer if you wish.

[www.ford.co.uk](http://www.ford.co.uk)



### Find a Dealer and request a test drive

You can search for a Ford Commercial Vehicle Dealer by location or Dealer name on the Ford website, and request a test drive online. Simply fill in your details and your chosen Dealer will contact you to arrange a convenient time.

[www.ford.co.uk](http://www.ford.co.uk)



### Commercial Vehicle Finance

When it comes to financing your Ford Commercial Vehicle, our size and expertise means we're well placed to provide you with a wide range of finance products.

**Ford Credit<sup>®</sup>:** Provides a range of finance plans for Commercial Vehicle customers interested in owning their vehicle.

**Ford Lease<sup>†</sup>:** Specialises in contract hire and leasing, and provides an alternative range of finance plans which can be tailored to suit your business. Business users only.

**For more information about our finance products visit [www.ford.co.uk](http://www.ford.co.uk)**



### FordPass Pro

Look after up to five business vehicles, with tools to help you keep them healthy, secure and running smoothly. So you can focus on the work.

FordPass Pro is designed for new Commercial Vehicles that come with FordPass Connect. Our built-in modem keeps you effortlessly connected with your vehicles, wherever you are. Giving you all the features you need to keep your business moving.

**FordPass Pro** is available in selected markets. Please see your Ford Dealer for details.

Download FordPass Pro from the App Store or get it on Google Play.

#### Important information:

<sup>®</sup>Ford Credit: Finance subject to status. Guarantees may be required. Freepost Ford Credit.

Ford Credit is a trading style of FCE Bank plc, which is authorised by the Prudential Regulation Authority and regulated by the Financial Conduct Authority and Prudential Regulation Authority under firm reference number 204469.

<sup>†</sup>Ford Lease: Ford Lease is provided by ALD Automotive Ltd., trading as Ford Lease, Oakwood Park, Lodge Causeway, Fishponds, Bristol, BS16 3JA. ALD Automotive is registered in England No. 987418. For the purposes of the Data Protection Act 1998 the data controllers in relation to any information you supply are Ford Motor Company Limited, FCE Bank Plc and ALD Automotive. Finance subject to status. Guarantees and indemnities may be required. ALD Automotive is authorised and regulated by the Financial Conduct Authority.

## 5 OWNERSHIP PROTECT

### Ford Business Service

Efficiency, accuracy and convenience are at the heart of the Ford Transit24 Commercial Vehicle service promise. Therefore, whether it is servicing, maintenance or repair you need, be sure to come and see us.

- Available from all Transit Centres and Transit Service Dealers
- While-you-wait servicing by prior appointment
- Late night servicing available at least once per week
- Priority treatment for urgent repairs
- Vehicle off the road repairs (VOR)\*
- Collection and delivery\*\*
- Testing and MOTs
- Transparent pricing
- Genuine Ford parts quality
- Ford-trained technicians
- Interim checks for optimum vehicle performance
- Service Activated Roadside Assistance†
- Ford Protect packages to suit you
- One Call to access all the Ford services you need

For more information and to find your nearest participating Ford Commercial Vehicle Dealer, visit the aftersales support section at [www.ford.co.uk/transit24](http://www.ford.co.uk/transit24)

### Service Plans

#### Save on your servicing costs

A Ford Protect Service Plan† fixes your servicing costs at today's prices for the duration of your plan, helping you save money.

Simply select the Ford Protect Service Plan that is most appropriate to your needs, with 2, 3 and 4 year plans available. Ford Protect Service plans can be paid for upfront, or if you buy online through the Ford Online Shop, the costs can be spread into convenient and affordable monthly payments. [www.shop.ford.co.uk/pages/service-plans](http://www.shop.ford.co.uk/pages/service-plans)

If you are looking for even more peace of mind, the Ford Protect Service Plan Plus includes everything already covered by the Ford Protect Service Plan, with the addition of Wear and Tear parts. All work on your vehicle will be undertaken by a Ford authorised repairer. Available through your Ford Dealer at point of registration only.

Ford Protect Service Plans must be purchased before the vehicle is 12 months old or before its first service. They are transferable to the new owner should you decide to sell your vehicle. Your Ford dealer will be happy to advise you on a plan which is tailored to your needs.

The duration of a Ford Protect Service Plan begins at the New Vehicle Warranty commencement date (usually the date of first registration). The length of your contract and your estimated mileage determines the number of services in a Ford Protect Service Plan.

### Ford Protect

#### Commercial Extended Warranty

Cover your vehicle beyond the new vehicle warranty up to 5 years with Ford Protect. Available at participating Ford Dealers.

By extending your standard 3-year warranty, you will enjoy worry-free operation for many years to come. Ford Protect provides a range of key benefits, including:

- Extended duration and mileage
- Cover against unexpected repair costs
- Coverage on trips abroad
- Protection against inflation for the price of parts and labour for the length of your plan
- Transferable to the next owner
- Helps protect your vehicle resale value

Ford Protect terms and conditions apply.

For further information please call

**03702 416 726, option 2, option 2.**

\*Repairs will start on the same working day (as long as you bring your vehicle in before 3pm), or at least within 24 hours of its arrival. If we need to order parts, we'll begin work the day they're delivered. 'Vehicle off the road' repairs should be completed within 24 hours.

\*\*Your Transit Centre can arrange to collect your vehicle and deliver it back to you after service or repairs, so you can get on with running your business. By arrangement and limited to a specific mileage radius of the Dealer. Contact your local Dealer to discuss your requirements.

†Available at participating Dealers only. Roadside Assistance is activated automatically at every routine service with coverage extended valid from the date of service for 12 months. See [Ford.co.uk/roadsideassistance](http://Ford.co.uk/roadsideassistance) for more information.

# FOR MORE INFORMATION ON THE FORD FAMILY, VISIT [WWW.FORD.CO.UK](http://WWW.FORD.CO.UK)



**Illustrations, descriptions and specifications.** This catalogue was correct at the time of going to print. However, Ford policy is one of continuous product development. The right is reserved to change specifications, colours and recommended prices of the models and items illustrated and described in this publication at any time. For the latest details always consult your Ford Dealer. **Optional equipment.** Throughout this publication, wherever a feature is described as being an 'Option' or 'Option Fitment/Pack' etc, you should assume that it will be at extra cost to the base vehicle, unless specifically stated to the contrary. All models and colour combinations are subject to availability. **Note.** Some images portrayed are of a pre-production model and/or are computer generated, therefore, the design/features on the final version of the vehicle may differ in various respects. In addition, some of the features shown on the vehicles may be optional. **Note.** This brochure contains both original Ford accessories as well as a range of products from our suppliers. Fitment of accessories may have an impact on your vehicle's fuel consumption. † The identified accessories are carefully selected third party supplier branded accessories which do not come with a Ford warranty but are covered by the third party supplier's own warranty, the details of which can be obtained from your Ford Dealer. **Note.** The Bluetooth® word mark and logos are owned by the Bluetooth SIG, Inc. and any use of such marks by Ford Motor Company is under licence. The iPod word mark and logos are the property of Apple Inc. Other trademarks and trade names are those of their respective owners. **Note.** Some driver assistance features and safety features described in this brochure are designed to function using sensors, whose performance may be affected under certain weather or environmental conditions.

**The Government fuel figures** do not express or imply any guarantee of the fuel consumption of any particular vehicle. The vehicles themselves have not been tested and there are inevitably differences between individual vehicles of the same model. In addition, a vehicle may incorporate particular modifications. Furthermore, the driver's style and road and traffic conditions, as well as the extent to which the vehicle has been driven and the standard of maintenance, will affect its fuel consumption. **Insurance groups** are only as recommended by the Association of British Insurers. You should always consult your insurance adviser for confirmation.

#### Ford One Call

In the unlikely event that your Ford Dealer can't help you or if you need to speak to us directly, call 0203 564 4444

#### Ford Rental – local service nationwide

Car and Van rental from our latest model range. Contact your local Ford Dealer for more information

#### Ford Motability

Call our Ford Motability team on 0345 6040019

#### Finance

Ford Credit Customer Services 0345 712 5490.  
Ford Lease Customer Services 0344 600 1405  
Calls to 0344 and 0345 numbers are charged at the same rate as a standard 01 or 02 geographic number, even when calling from a mobile.



Ford and BP – working together to reduce fuel consumption and emissions.

Published by Ford Motor Company Limited, Laindon, Essex, England. Registered in England No. 235446.

FA 1545/16  
BJN 208848. FoE H44E  
0721/GBR en  
July 2021.

© Ford Motor Company Limited.

MY 2021.75 GBR en



[WWW.FORD.CO.UK](http://WWW.FORD.CO.UK)

